



Redlands Weekly Update

Achieving Excellence Together

6 December 2019

Last day of term

Please be reminded that the **last day of term** is **Thursday, 19 December 2019.**



First day of term

Please be reminded that the children come back to school for the start of Spring Term on **Monday, 6 January 2020.**



Advisory Board

We are pleased to announce our two new parent Advisory Board Members are Simon Dalby and Claire Zmija. Please join us in welcoming them.

Scholastic Book Fair



Don't miss out! Scholastic Christmas Book Fair will be at Redlands between Wednesday 4th December and Monday 9th December 3.30pm-4.00pm in the Year 5/6 Block.

Top 5 Christmas Lists



This week **Miss Farley** from our Year 3 team has given us her Top 5 Christmas Films:

- #1 Love Actually
- #2 Elf
- #3 The Snowman
- #4 The Grinch
- #5 The Muppet Christmas Carol



4-9 DEC WEDS-MON	Scholastic Book Fair
10 DEC TUESDAY	Years 1 & 2 Nativity – 2pm
11 DEC WEDNESDAY	Years 1 & 2 Nativity – 9:30am and 5pm
13 DEC FRIDAY	Save the Children Christmas Jumper Day & School Christmas Dinner
16 DEC MONDAY	Christmas Carol Service (OZP/Year 3/Year 4) – 2pm
17 DEC TUESDAY	Christmas Carol Service (OLS/Year 5/Year 6) – 2pm
19 DEC THURSDAY	FORS Pantomime (in school)
19 DEC THURSDAY	Last day of Autumn term *
6 JAN MONDAY	First day of Spring term * 🌸
15 JAN WEDNESDAY	Admissions Deadline Day (first-time applications for September 2020)
17 JAN FRIDAY	Coffee Chat, 9.00am
22 JAN WEDNESDAY	National Child Measurement Programme – click here for details
14 FEB FRIDAY	Year 3 Group Assembly

This week's letters

- ✉ Norovirus – [click here](#)
- ✉ SHS Swim letter – [click here](#)



We can now confirm that the solar panels installation will be taking place week commencing 16 December. For that week, there will be no access to the Bike Shed – **no bikes or scooters will be able to be stored on-site** during this week.



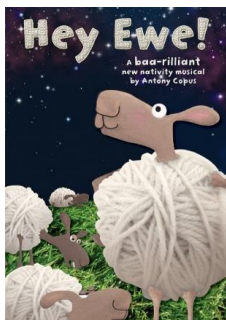
Save the Children
CHRISTMAS JUMPER DAY

Friday 13th December

All children and staff will have the opportunity to wear a Christmas jumper, or other festive accessories, in return for a **£1 donation**.

After School Clubs

Booking for After School Clubs will open at 4pm today. Spaces are limited and when a club is full it will no longer be viewable on ParentPay.



Reminder: Year 1 and Year 2 Nativity performance times

- Tuesday, 10 December, 2.00pm
- Wednesday, 11 December, 9.30am
- Wednesday, 11 December 5.00pm

Check tickets for arrival times and **please arrive promptly** as gates will be closed five minutes before performance time.

Thank you!

Through your orders of school photos Redlands and Braiswick Photographic have been able to donate the amount of **£89.50 to Cancer Research**.

With our Year 6 children selling Poppies and other Remembrance items, Redlands raised **£220.75 for the Poppy Appeal**.

For **Children in Need** we have raised **£646.90** through fancy dress, biscuit sales and other fun activities.

Thank you all for your wonderful generosity!



Learnful

WITH JO BRADLEY

Please click on the appropriate link below:

EYFS/KS1: [Pens and Pencils Ready!](#)

KS2: [Pens and Pencils Ready!](#)



Term dates 2019-20

Autumn	School opens	- Thursday 29 August 2019
	Mid-term break	- Monday 14 to Friday 18 October 2019
	School closes	- Thursday 19 December 2019*
Spring	School opens	- Monday 6 January 2020*
	Mid-term break	- Monday 17 to Friday 21 February 2020
	School closes	- Thursday 2 April 2020*
Summer	School opens	- Monday 20 April 2020
	Bank holiday	- Friday 8 May 2020*
	Mid-term break	- Monday 25 to Friday 29 May 2020
	School closes	- Friday 10 July 2020

***Denotes a change to the original Term Dates issued**

Polite reminders

Parking If you do need to travel to school by car, please park safely well away from school and be considerate to other parents and local residents. Parents must **not** park in the school car parks at any time.

Absences If your child is absent from school, please inform the School Office before 9:00am.

Sickness If your child has sickness or diarrhoea they cannot return to school until 48 hours after the **last episode** of sickness and/or diarrhoea. Please contact the school **on a daily basis**, prior to 9:00am, to advise of the reason for your child's absence.

ParentPay Please book all school meals in advance on ParentPay.

Label all items Please name all of your children's clothes and other items they bring in to school, e.g. lunchboxes, drink bottles.

School opens The school gates open at 8:40am. Children are the responsibility of the parent until 8:45am and must be supervised on the playground.

Contacting a teacher If you wish to talk to a class teacher during the school day then please call and make an appointment.

Photos Please remember to 'post' only photographs of your own children on social media websites. Ensure no images of other children are displayed.

01509 812 376



office@dsatredlands.org



redlands.org.uk



[@SilebyRedlands](https://twitter.com/SilebyRedlands)

Headteacher: Mrs Michelle Tobin

Redlands Community Primary School
King Street, Sileby
Leicestershire
LE12 7LX