



Redlands Weekly Update

Achieving Excellence Together

29 November 2019

Last day of term

Please be reminded that the **last day of term** is **Thursday, 19 December 2019**.



First day of term

Please note that we made a mistake on last week's Weekly Update – we can confirm that the children come back to school for the start of Spring Term on **Monday, 6 January 2020**.

Apologies for the error.



Family Christmas Decorations Afternoon

We would like to invite parents/carers into school for an afternoon to join their children in making Christmas decorations.



illustrated by Robin Fitzroy

Please [click here](#) for further details.

Due to the interactive nature of the event and limited space, unfortunately children not enrolled at Redlands are not able to attend – this includes younger siblings.

Scholastic Book Fair



Don't miss out! Scholastic Christmas Book Fair will be at Redlands between **Wednesday 4th December and Monday 9th December 3.30pm-4pm in the Year 5/6 Block.**


KEEP CALM AND CALL YOUR FAMILY SUPPORT WORKER

We are pleased to inform you that Mrs Hodgkinson will be joining Redlands on a full time basis from Tuesday 10th December. We are very pleased to welcome Mrs Hodgkinson on a full time basis as she continues to support the families of Redlands.



2 DEC MONDAY	Family Christmas Decorations – click here
4–9 DEC WEDS–MON	Scholastic Book Fair
6 DEC FRIDAY	FORS Christmas Fayre
10 DEC TUESDAY	Years 1 & 2 Nativity – 2pm
11 DEC WEDNESDAY	Years 1 & 2 Nativity – 9:30am and 5pm
13 DEC FRIDAY	Save the Children Christmas Jumper Day & School Christmas Dinner
16 DEC MONDAY	Christmas Carol Service (OZP/Year 3/Year 4) – 2pm
17 DEC TUESDAY	Christmas Carol Service (OLS/Year 5/Year 6) – 2pm
19 DEC THURSDAY	FORS Pantomime (in school)
19 DEC THURSDAY	Last day of Autumn term *
6 JAN TUESDAY	First day of Spring term *

This week's letters

- Save the Children Christmas Jumper Day
- Family Christmas Decorations afternoon – [click here](#)
- Scholastic Book Fair letter – [click here](#)
- Scholastic Book Fair leaflet – [click here](#)



To reduce our Carbon Footprint Redlands will be having Solar panels installed onto our Year 5/6 block roof space during late December. As a result there will be no access to the Bike Sheds and therefore **children will not be able to store bikes/scooters on site during the day.** We will confirm the start date as soon as possible.

Please be aware that for the Carol Services on Monday 16th and Tuesday 17th December, St Mary's Church doors will remain closed until the children arrived and are seated, at which point all parents/carers waiting at the church will be able to enter.



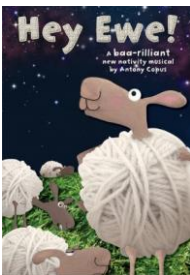
Save the Children
CHRISTMAS JUMPER DAY

All children and staff will have the opportunity to wear a Christmas jumper, or other festive accessories, in return for a £1 donation.

Friday 13th December

After School Clubs

Coming soon... Details regarding next term's after school clubs will be distributed on Monday via email. Bookings will open at 4pm Friday 6th December.



The Year 1 and Year 2 Nativity will take place on Tuesday 10th December at 2pm and Wednesday 11th December at 9:30am and 5pm. Tickets will be distributed week commencing 2nd December.

TICKETS



Learnful
WITH JO BRADLEY

Please click on the appropriate link below:

EYFS/KS1: [Breath for Calm](#)

KS2: [Friendships – Awareness, Choices and Control](#)



Term dates 2019-20

Autumn	School opens	- Thursday 29 August 2019
	Mid-term break	- Monday 14 to Friday 18 October 2019
	School closes	- Thursday 19 December 2019*
Spring	School opens	- Monday 6 January 2020*
	Mid-term break	- Monday 17 to Friday 21 February 2020
	School closes	- Thursday 2 April 2020*
Summer	School opens	- Monday 20 April 2020
	Bank holiday	- Friday 8 May 2020*
	Mid-term break	- Monday 25 to Friday 29 May 2020
	School closes	- Friday 10 July 2020

*Denotes a change to the original Term Dates issued

Polite reminders

Parking If you do need to travel to school by car, please park safely well away from school and be considerate to other parents and local residents. Parents must **not** park in the school car parks at any time.

Absences If your child is absent from school, please inform the School Office before 9:00am.

Sickness If your child has sickness or diarrhoea they cannot return to school until 48 hours after the **last episode** of sickness and/or diarrhoea. Please contact the school **on a daily basis**, prior to 9:00am, to advise of the reason for your child's absence.

ParentPay Please book all school meals in advance on ParentPay.

Label all items Please name all of your children's clothes and other items they bring in to school, e.g. lunchboxes, drink bottles.

School opens The school gates open at 8:40am. Children are the responsibility of the parent until 8:45am and must be supervised on the playground.

Contacting a teacher If you wish to talk to a class teacher during the school day then please call and make an appointment.

Photos Please remember to 'post' only photographs of your own children on social media websites. Ensure no images of other children are displayed.

01509 812 376

office@dsatredlands.org

redlands.org.uk

[@SilebyRedlands](https://twitter.com/SilebyRedlands)

Headteacher: Mrs Michelle Tobin

Redlands Community Primary School
King Street, Sileby
Leicestershire
LE12 7LX